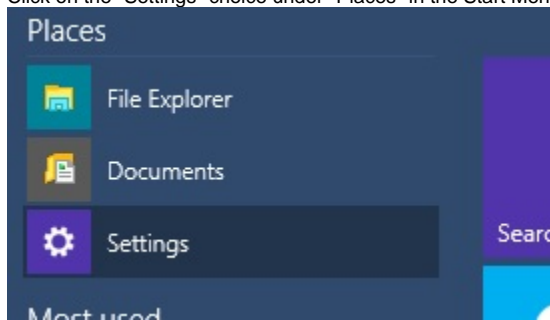


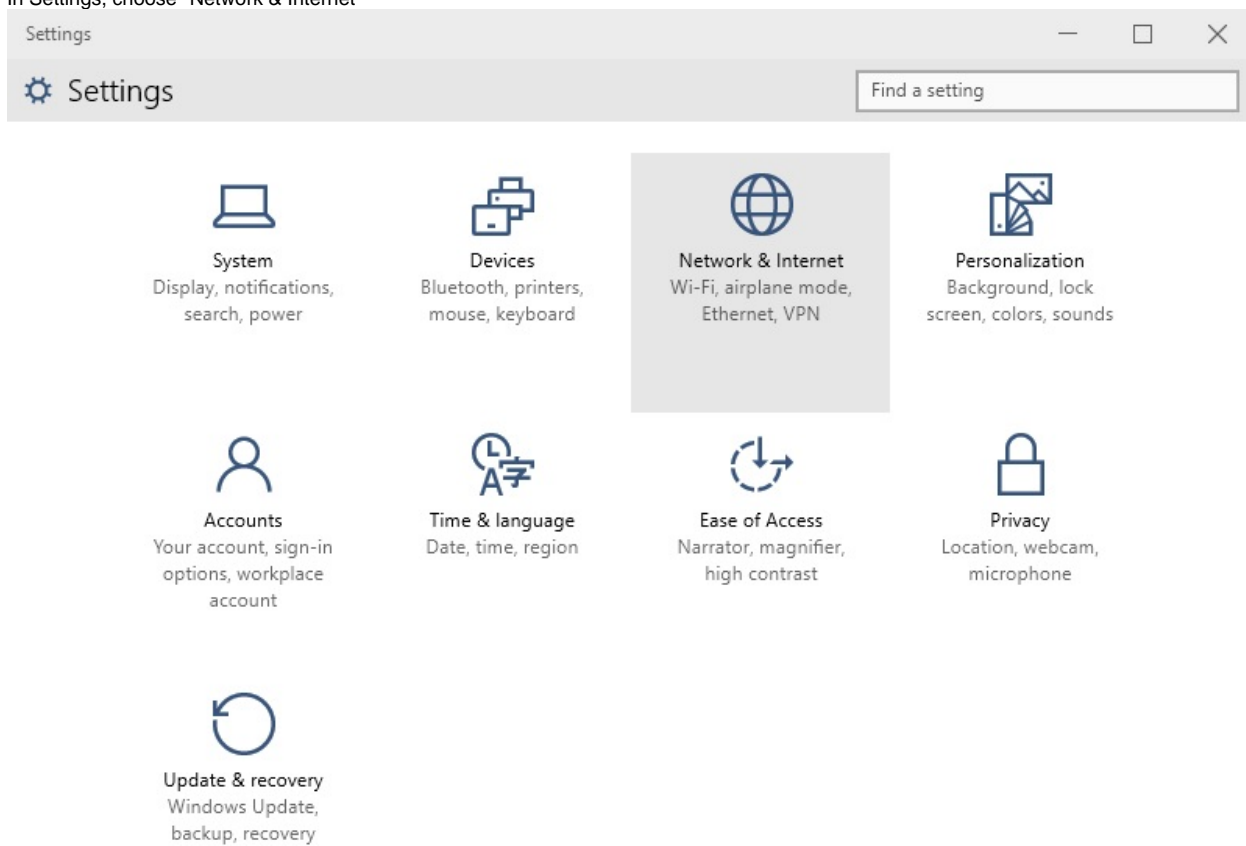
# WiFi - Connecting a Windows 10 Computer to WSU Wireless

## WiFi - Connecting a Windows 10 computer to WSU Wireless

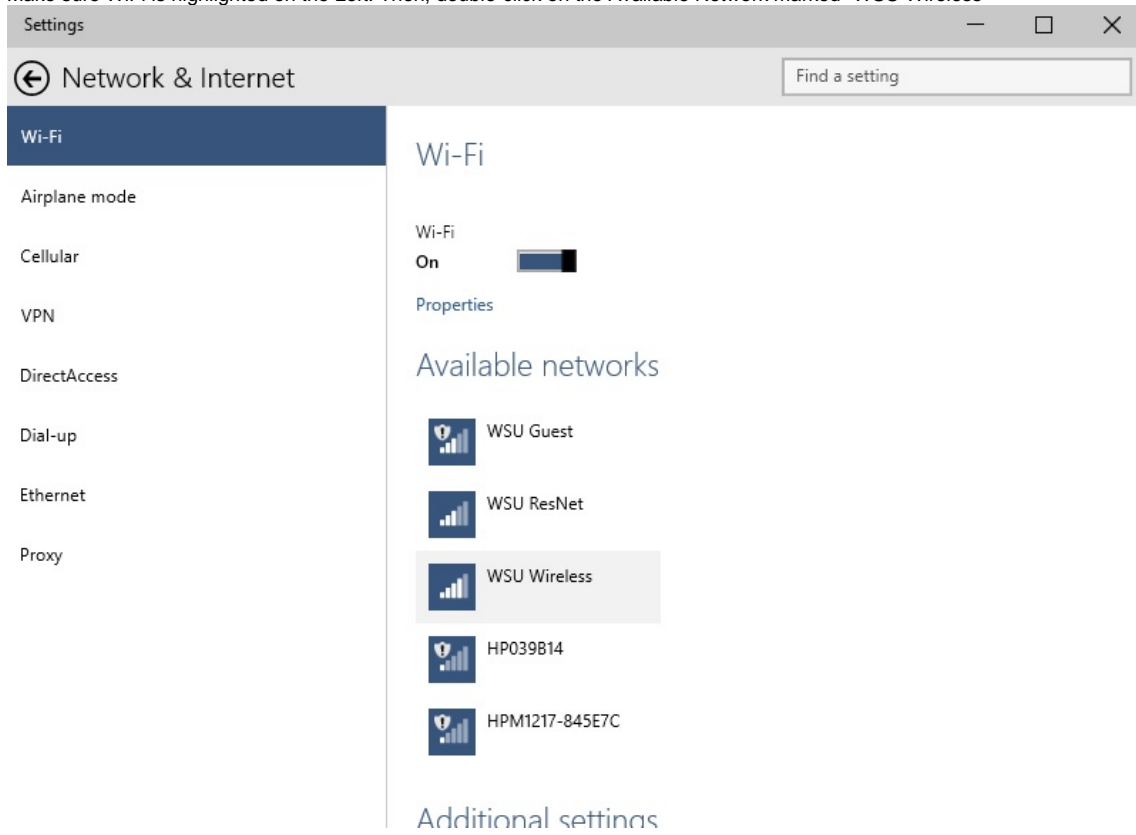
Click on the "Settings" choice under "Places" in the Start Menu.



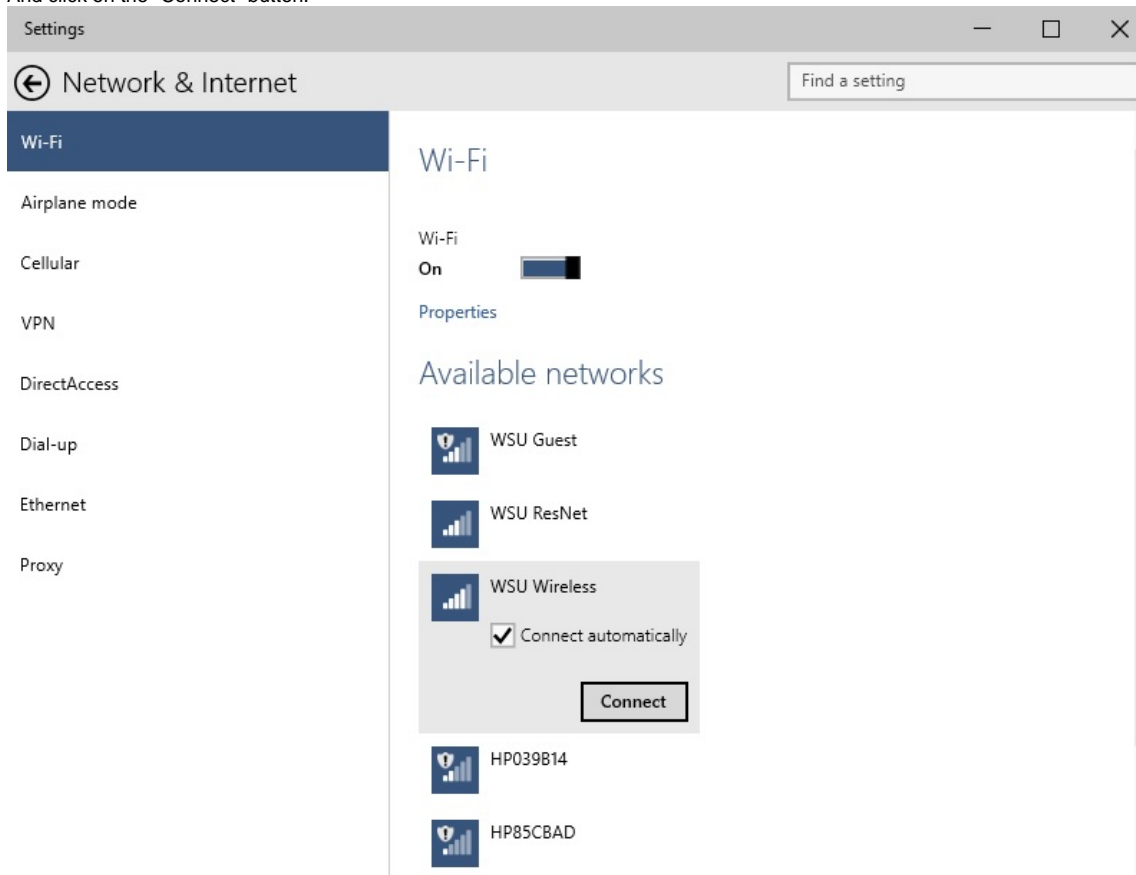
In Settings, choose "Network & Internet"



Make sure WiFi is highlighted on the Left. Then, double-click on the Available Network marked "WSU Wireless"

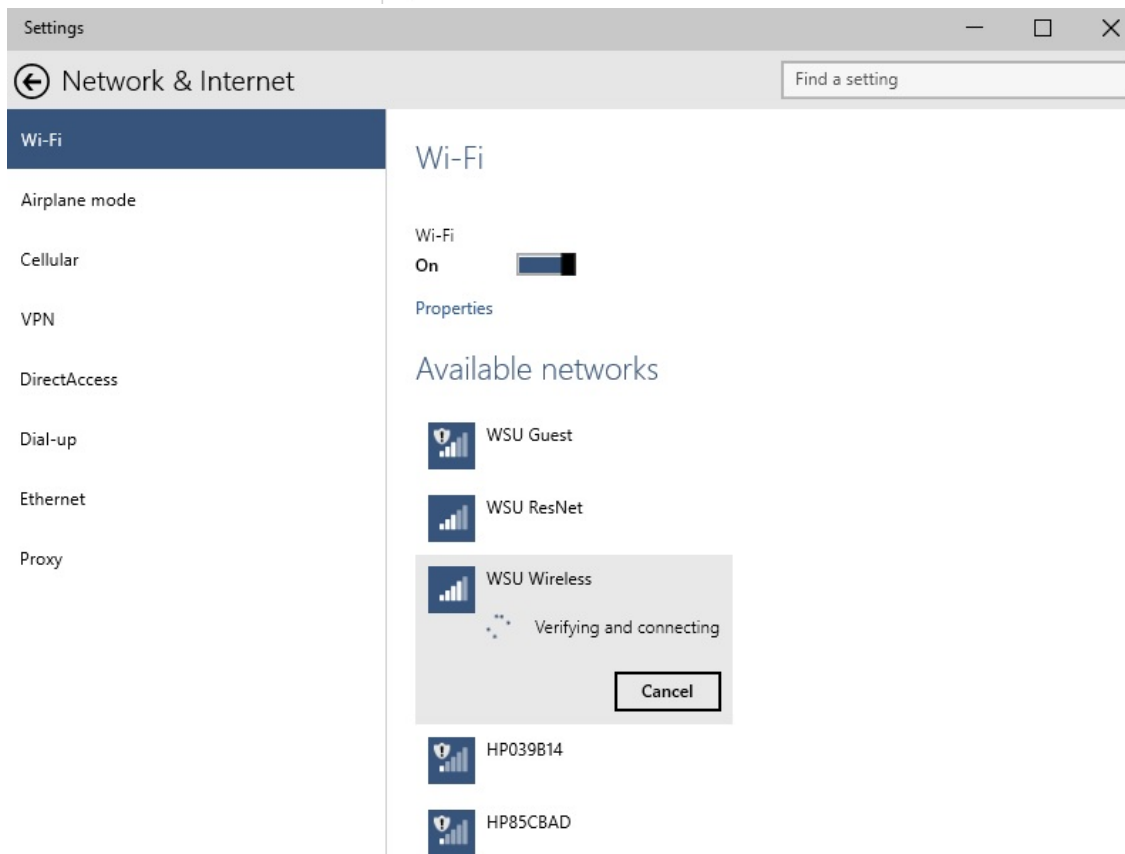
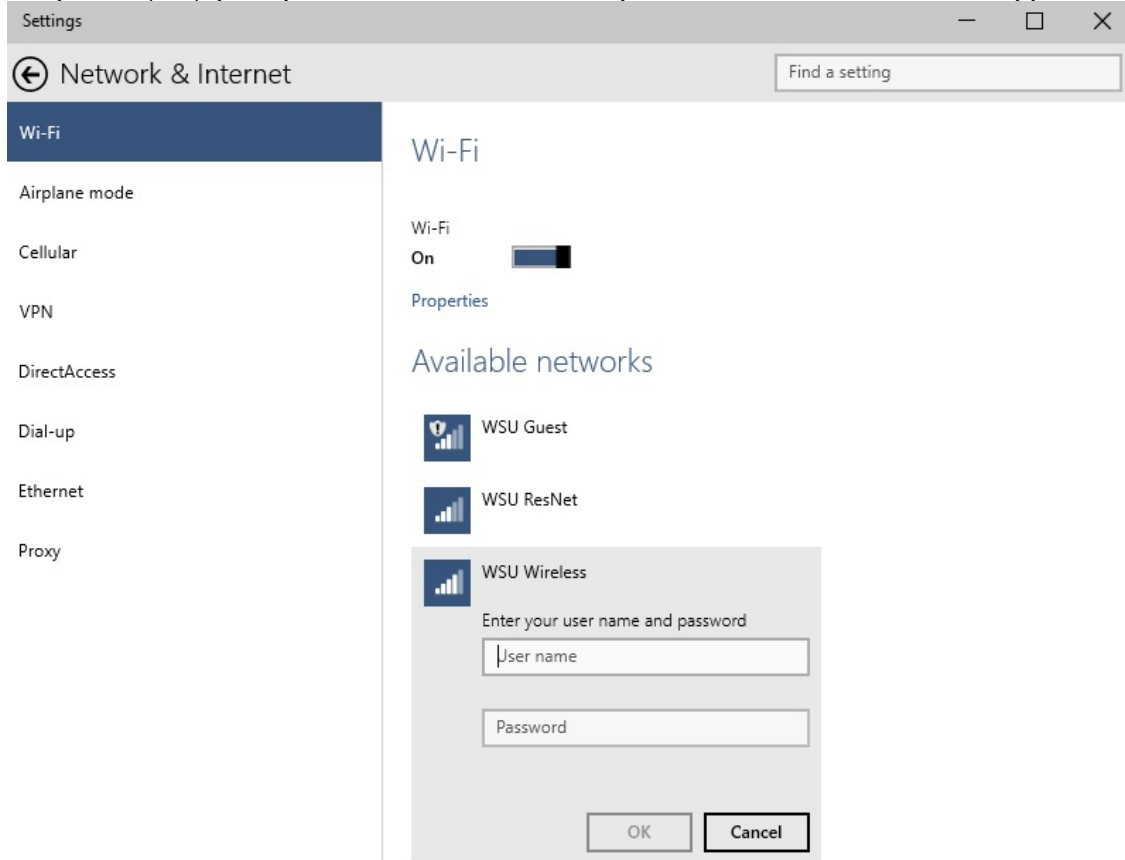


And click on the "Connect" button.

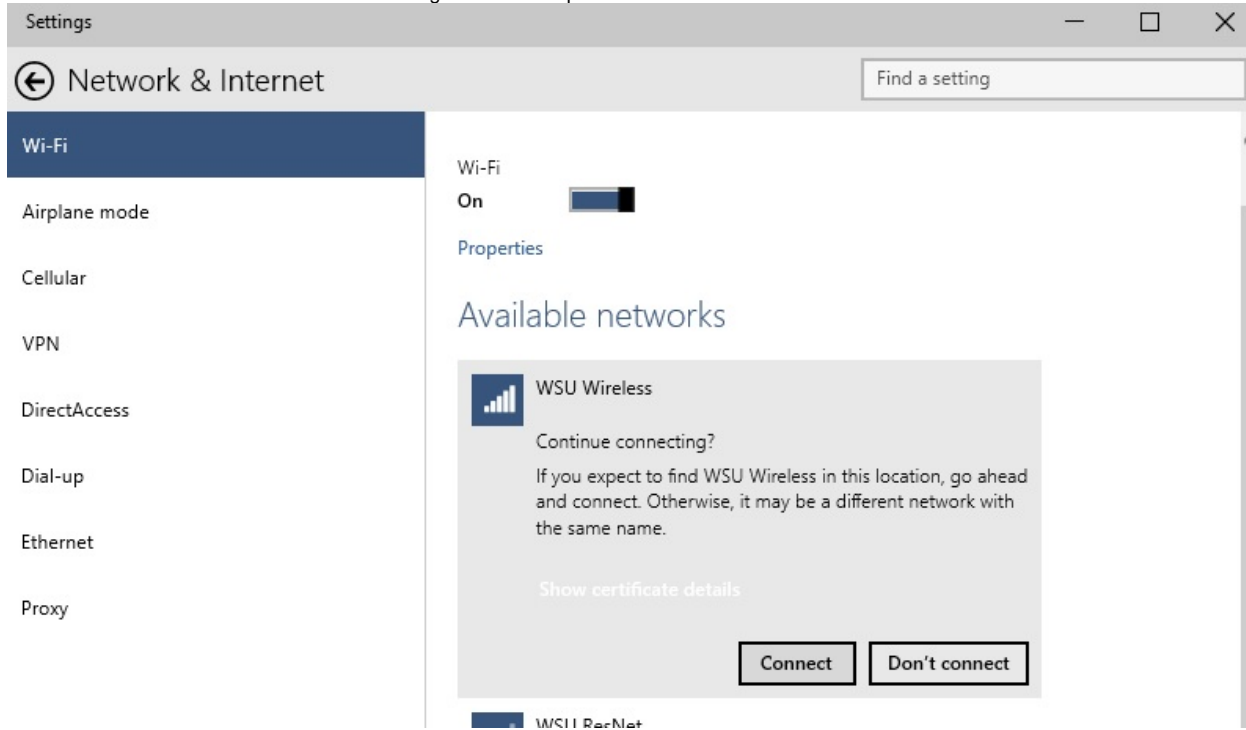




The system will prompt you for your Username and Password. Put in your Network ID and Password the same way you would sign into MyWSU.



Choose to "Connect" if the "Continue Connecting" box comes up.



WSU Wireless will now show as "Connected"

