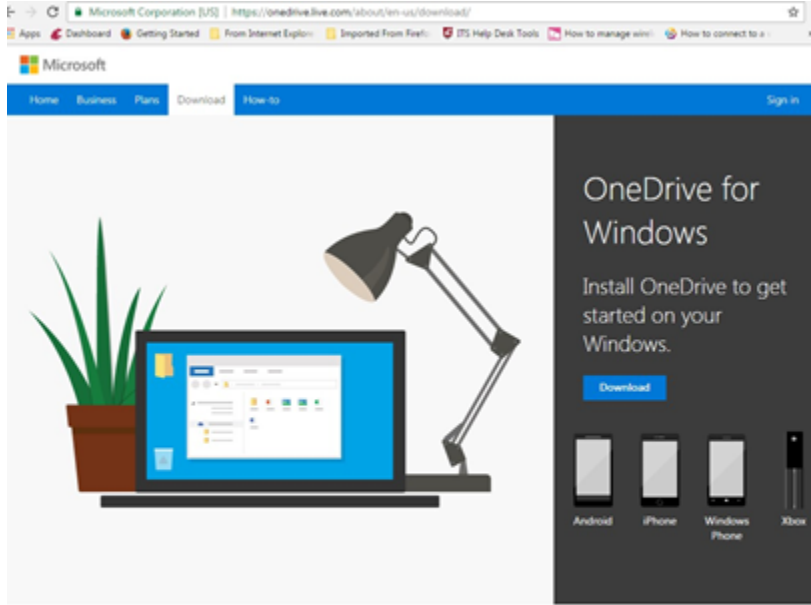


OneDrive - How to Install OneDrive on Windows

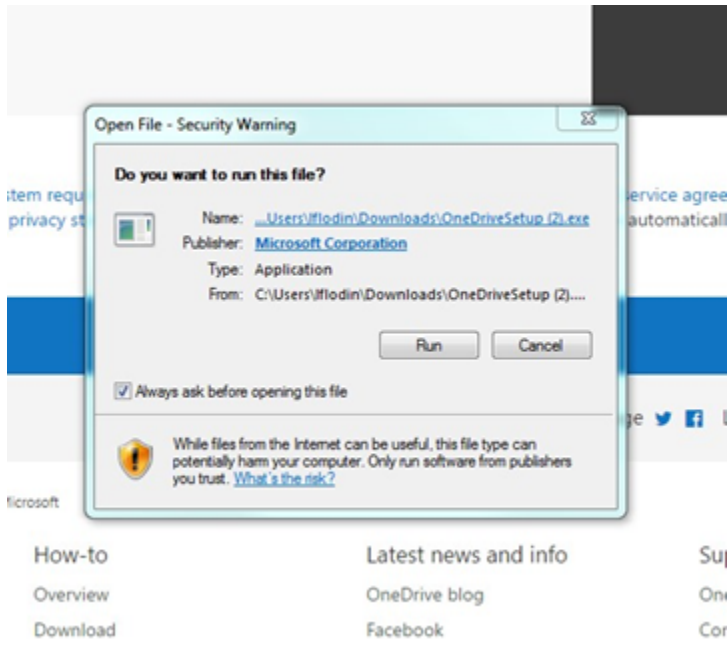
OneDrive: How to Install OneDrive on Windows

How to install OneDrive on Microsoft Windows.

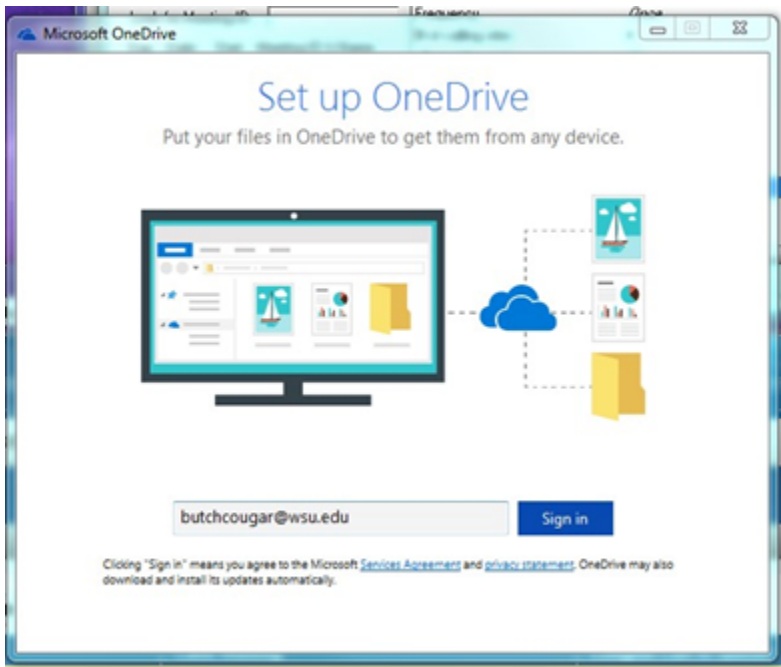
1. Go to <https://onedrive.live.com/about/en-us/> and select the download option.



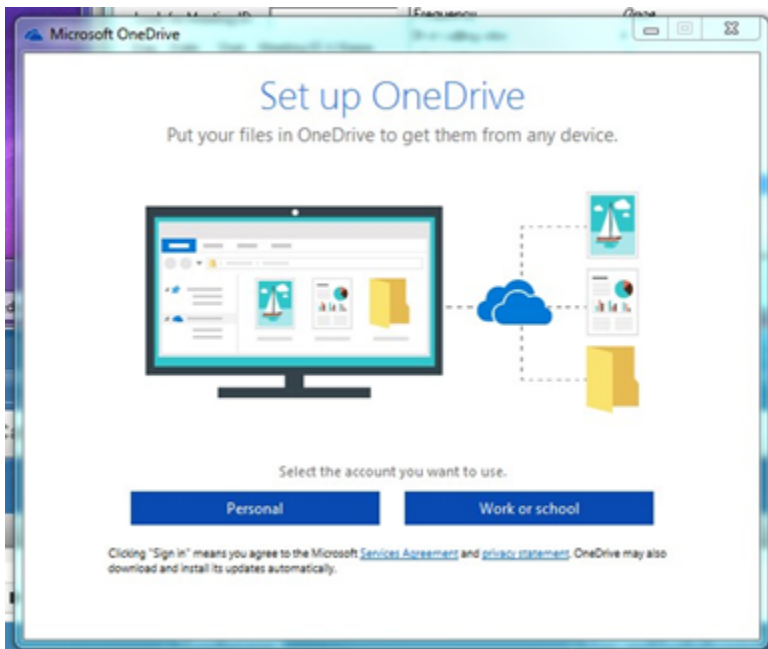
2. Select **Run** from the install prompt.



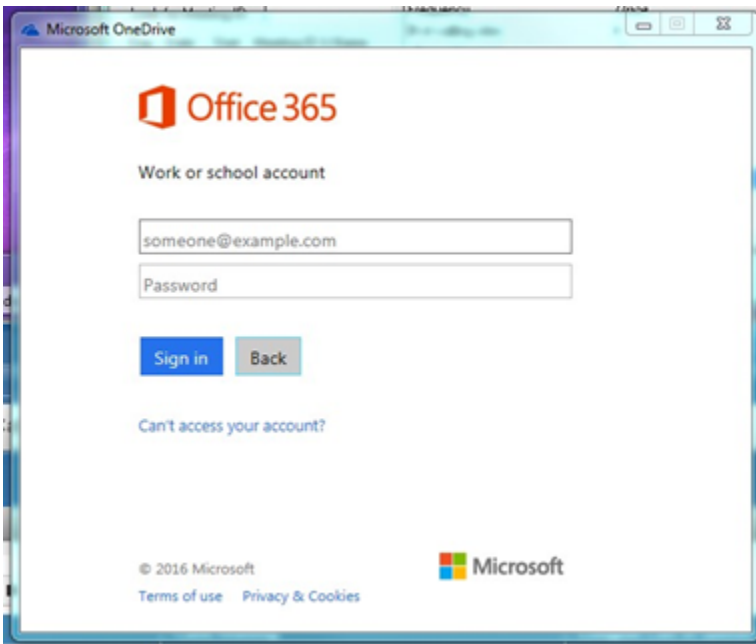
3. You will be asked to enter your WSU email address (*yournetworkid@wsu.edu*).



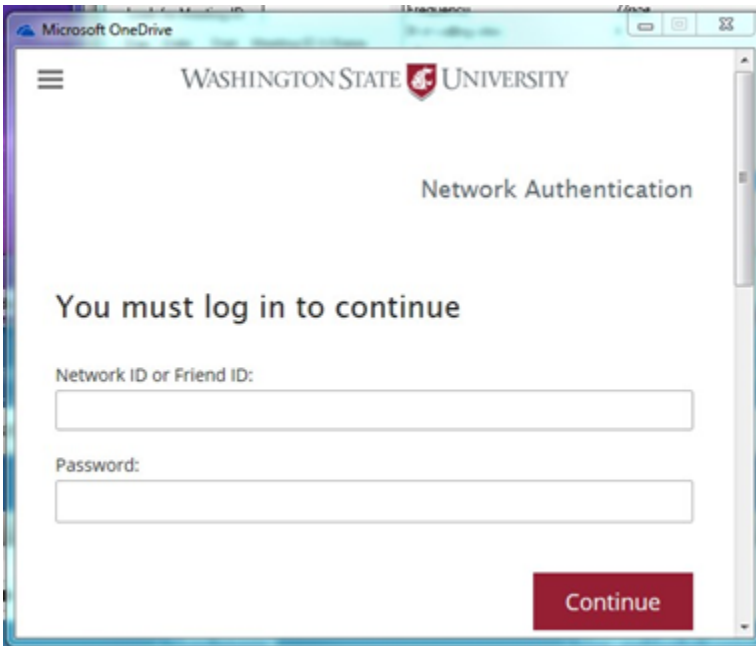
4. Select the button for **Work or School**.



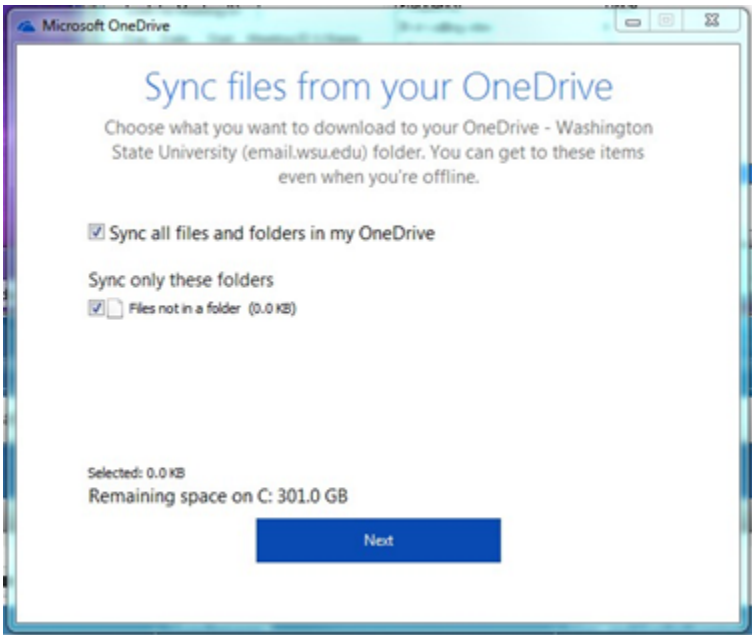
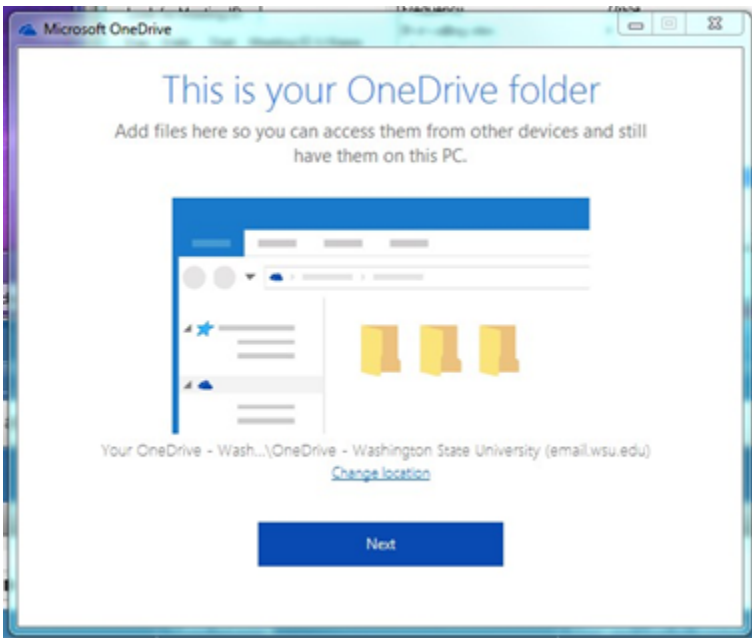
5. Enter your WSU email address to verify your affiliation with WSU.



6. You should see the familiar WSU Authentication page where you will need to enter your NID and password.



7. You will then be guided through the account set up.




8. You have successfully set up your OneDrive account on your Windows machine

Microsoft OneDrive

Your OneDrive is ready for you

We'll sync your files to this PC. To add files to OneDrive, just move them to your OneDrive - Washington State University (email.wsu.edu) folder.



Open my OneDrive - Washington State University (email.wsu.edu) folder

The image shows a Windows-style window titled "Microsoft OneDrive". The main content area has a white background with blue text. At the top, it says "Your OneDrive is ready for you". Below that, a paragraph explains that files will be synced to the PC and that files should be moved to a specific folder. In the center, there is a square inset with a black border showing a screenshot of the OneDrive web interface. This inset shows a sidebar with folder icons, a search bar, and a main area with a list of files and folders. At the bottom of the window, there is a blue button with white text that says "Open my OneDrive - Washington State University (email.wsu.edu) folder".