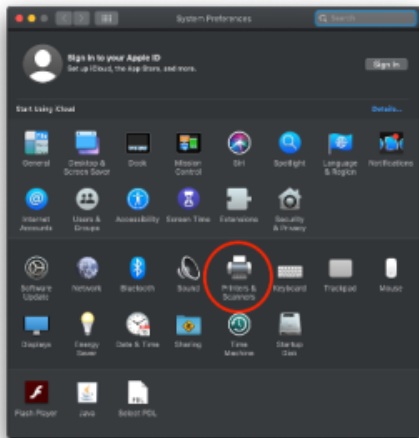


# Printing: How to Install and Uninstall a printer on a Mac

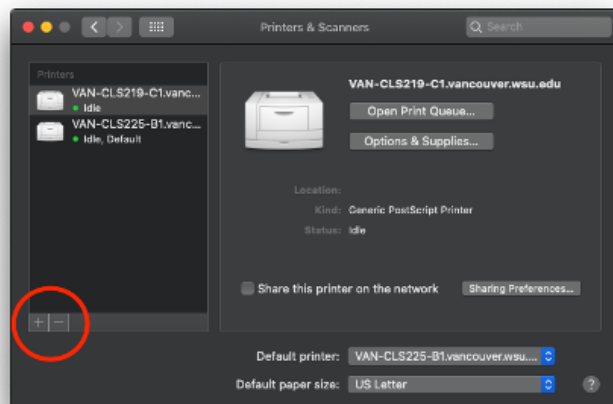
**Step 1:** Open System Preferences by clicking on the Apple icon in the upper left-hand corner. Then click on "Printers & Scanners"



**Step 2 - Remove Printer:** Select the printer you want to uninstall and push the minus sign ( - ) button

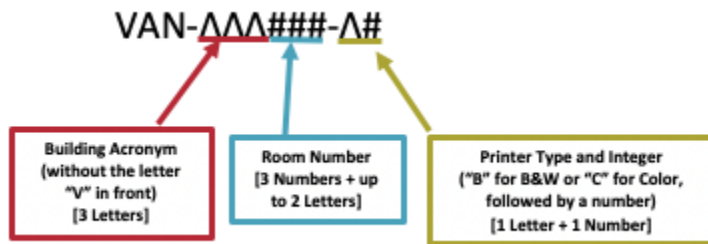
**Step 3 - Download and install the correct print driver:** You'll need to check the printer to see what model it is. Make sure you make a note of the exact model name as small variations often matter. Then go to the manufacturer's website and download the driver for that model and for your operating system version. The operating system version can be found in the apple menu > About This Mac.

**Step 3 - Add New Printer:** Select the plus sign ( + ) button



**Step 3:** Click on IP button and then enter the address of your printer.

Address: Typically, there is a label on the printer with its name. The naming convention is:

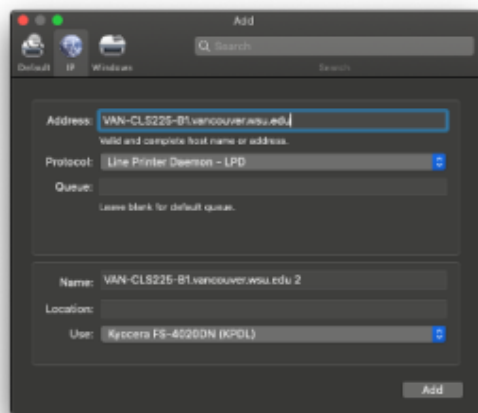


Examples: VAN-CLS225-B1, VAN-FSC020-C1, etc. You can also go to [printers.vancouver.wsu.edu](http://printers.vancouver.wsu.edu) and find the name there.

Protocol: Select "Line Printer Daemon – LPD".

If connecting to a HP printer select "HP Jetdirect – Socket"

Use: This typically auto populates with the correct driver. Except for when it doesn't and then you have to select it the corresponding driver manually.



For printers that require a print code (pin), extra steps are required and are tricky. Contact the VIT Helpdesk for this or other problems with the above - (360) 546-9770, [van.evita@wsu.edu](mailto:van.evita@wsu.edu) , or [our Zoom support Helpdesk](#).